

VR2 FLASH CODES



Low Battery Voltage

The battery needs charging or there is a bad connection to the battery. Check the connections to the battery. If the connections are good, try charging the battery.



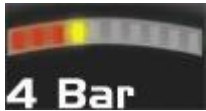
Left Motor Disconnected

The left motor* has a bad connection. Check all the connections and leads between the left motor and the Power Module.



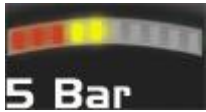
Left Motor Wiring Trip

The left motor* has a short circuit to a battery. Check all the connections and leads between the left motor and the battery.



Right Motor Disconnected

The right motor* has a bad connection. Check all the connections and leads between the right motor and the Power Module.



Right Motor Wiring Trip

The right motor* has a short circuit to a battery. Check all the connections and leads between the right motor and the battery.



Charger Connected

The wheelchair is being prevented from driving by an external signal. The exact cause will depend on the type of wheelchair you have, one possibility is the battery charger is connected.



Possible Joystick Trip

A joystick trip is indicated. Make sure that the joystick is in the center position before switching on the VR2.



Possible Control System Trip

A control system trip is indicated. Make sure that all connections are secure.



Solenoid Brake Trip

The parking brakes have a bad connection. Check the parking brake and motor connections. Make sure the system connections are secure.



Solenoid Brake Trip

The parking brakes have a bad connection. Check the parking brake and motor connections. Make sure the system connections are secure..

Commonly Seen Informational Flash Codes



Charge Step

The batteries are charging.



Joystick Displaced

The joystick has been displaced whilst the control system is switched on. Place the joystick in the center position and turn the control system on and off again.



Speed Limit In Operation

This indicates the speed of the wheelchair is being limited for safety reasons. The exact reason will depend on the type of wheelchair, however, the most common cause is that the seat is in the elevated position.



Control System Locked

This indicates that the VR2 has been locked and cannot be driven. Unlock the VR2.