



**SPIERINGS  
CRANES**

**Make: SPIERINGS**

**Type: SK599-AT5**

**Crane specification**

Serial number

Crane group : 3 as per NEN 2018  
 Loadspectrum : 2 as per NEN 2018  
 Classification : A as per NEN 2018  
 Stability : as per NEN 2022

Max. load

**9,0 tonne**

Max.radius  
with max. load

**13,8 m**

Max. capacity

**124 tm**

Max. jib length

**48 m**

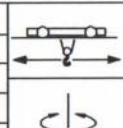
Year of construction

**Speeds**

Jib horizontal / jib 30° luffed



m/min	kg
20	9000
32	4500
50	2250
75	0



0 - 70 m/min

0 - 0,9 rpm

All motions with hydraulic proportional controls  
 Luffing the jib 30° can be controlled from crane cab or via remote control  
 The crane should be folded in at a wind force of 9 on the Beaufort scale (wind speed 21 m/min) or when not in use for a longer period

Crane equipped with full counterweight: 11200 kg  
 360° continuous slewing : with outriggers out and down  
 Operating temperature : range from -15° to 40° C.

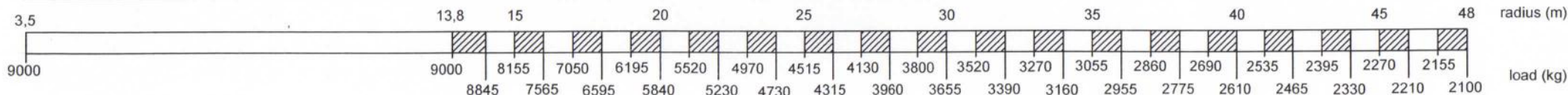
Rated lifting capacity is net capacity  
 In all cases 2 parts of line  
 Max. line pull force : 4500 kg  
 Sail area of the load : max. 1,0 m<sup>2</sup> / tonne  
 Max. outrigger loading: 470 kN

**Outrigger position : 7,50 x 7,66 m**  
 Operation allowed up to a wind force of 7 on the Beaufort scale (wind speed 17 m/sec)  
**Outrigger position : 7,50 x 5,72 m**  
 Operation allowed up to a wind force of 7 on the beaufort scale (wind speed 17 m/sec)

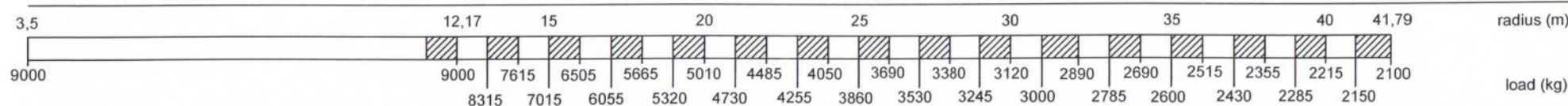
**Lifting chart Outrigger spread 7,50 m x 7,66 m**

**Jib horizontal**

Hookheight 25,5 / 32,6 m (height under jib 27,8 / 34,6 m)



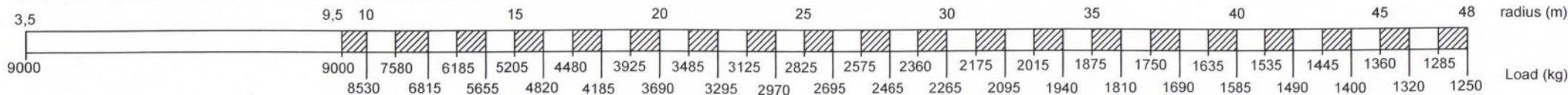
**Jib 30° luffed**



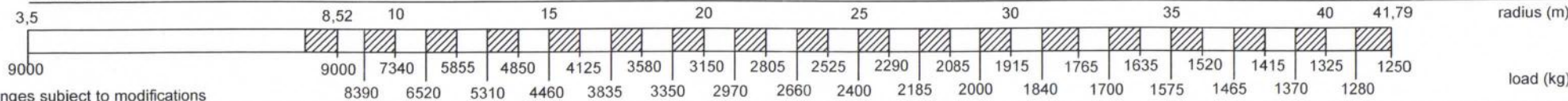
**Lifting chart Outrigger spread 7,50 m x 5,72 m**

**Jib horizontal**

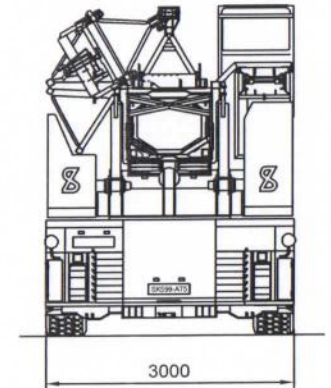
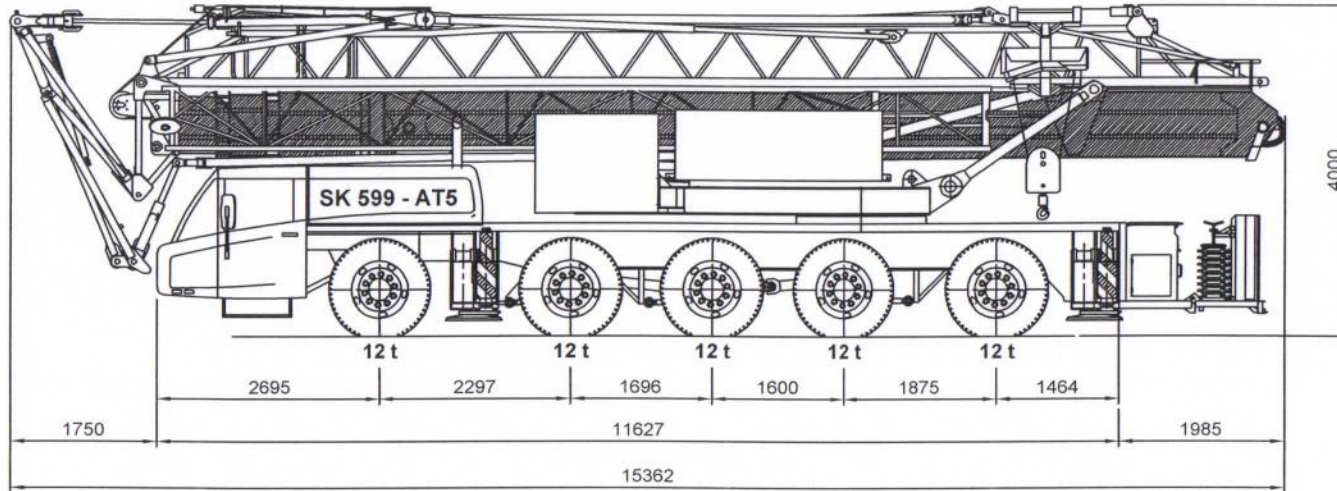
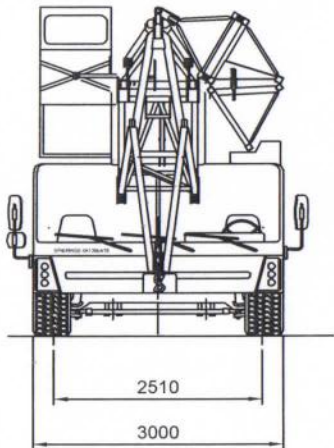
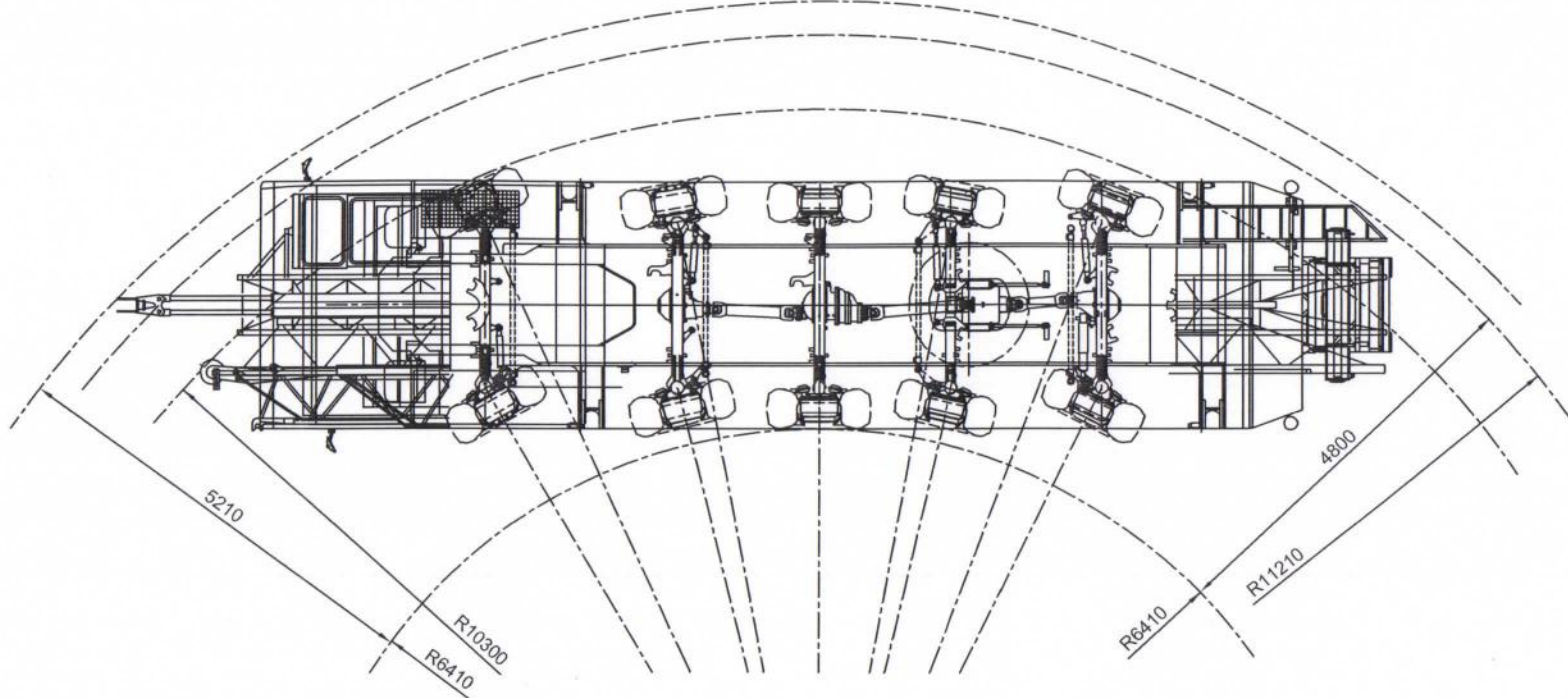
Hookheight 25,5 / 32,6 m (height under jib 27,8 / 34,6 m)



**Jib 30° luffed**



changes subject to modifications



# Spierings Hydraulic Folding Crane SK 599 - AT5

Total weight: 60000 kg  
changes subject to modifications

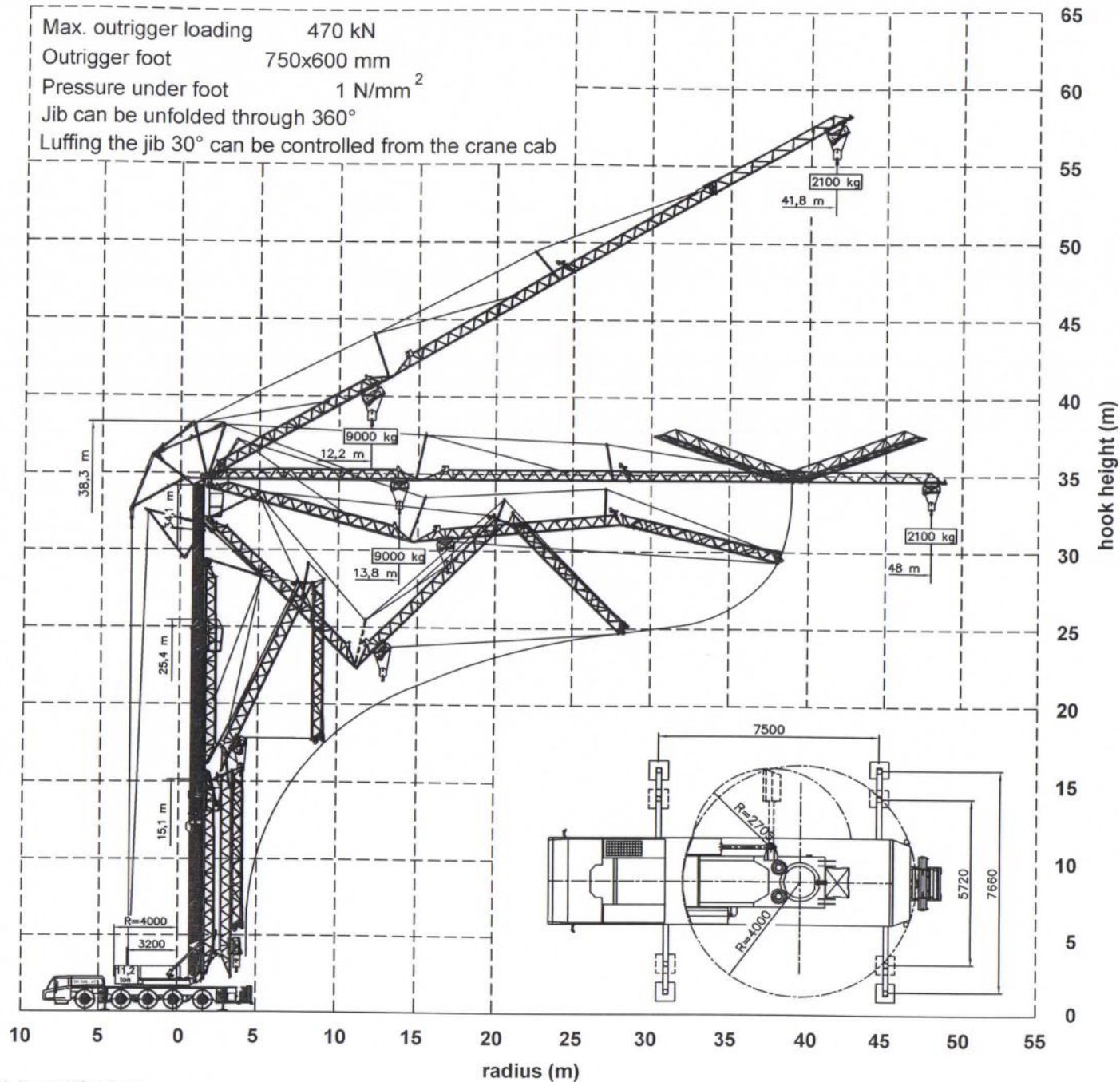
**SPIERINGS  
KRANEN**  
Merwedestraat 15  
5347 KZ Oss NL  
Tel. +31 (0)412-626964  
Fax +31 (0)412-645299

Max. outrigger loading 470 kN  
 Outrigger foot 750x600 mm  
 Pressure under foot 1 N/mm<sup>2</sup>  
 Jib can be unfolded through 360°  
 Luffing the jib 30° can be controlled from the crane cab

# SPIERINGS

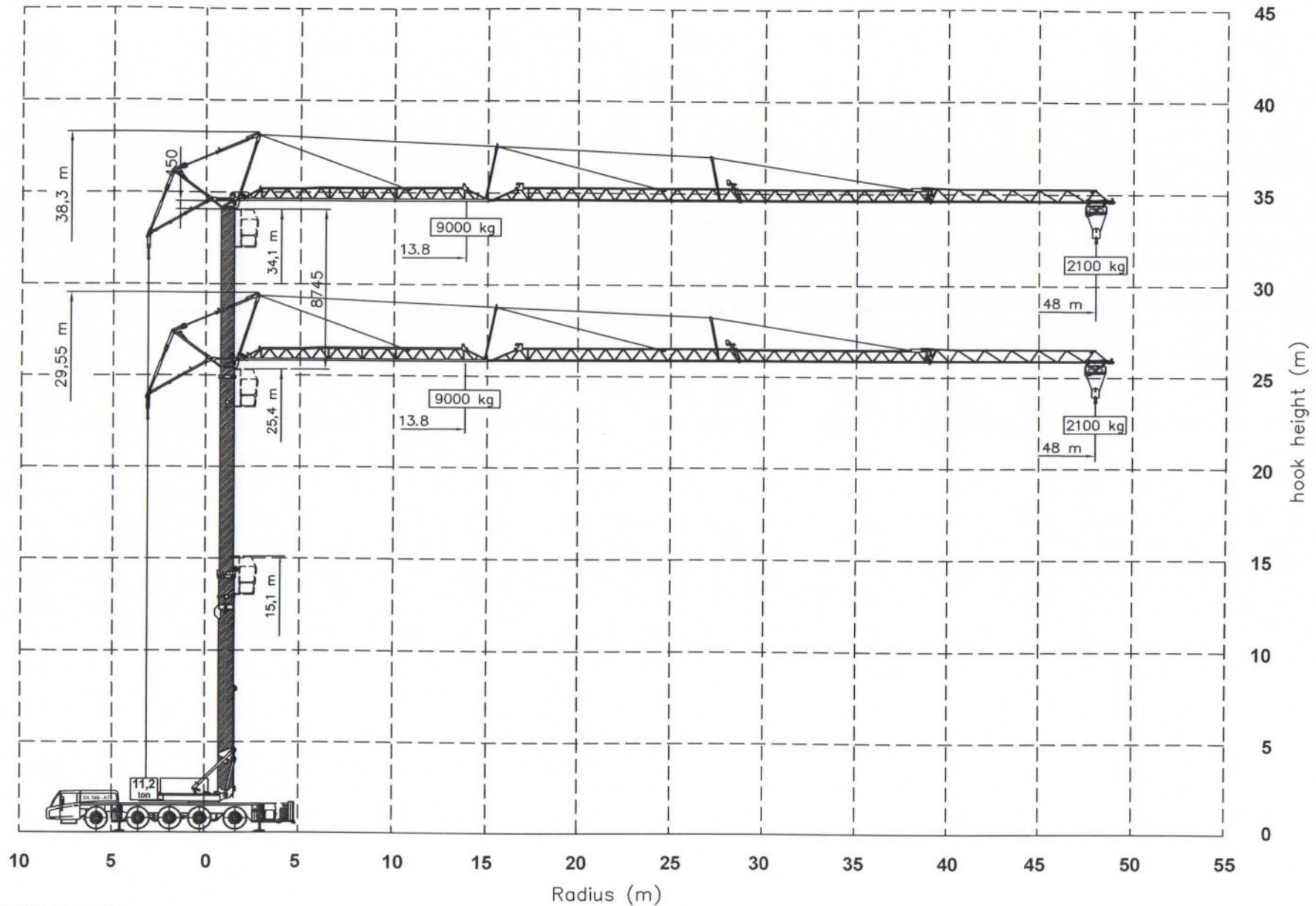
## HYDRAULIC FOLDING CRANE

### SK599-AT5

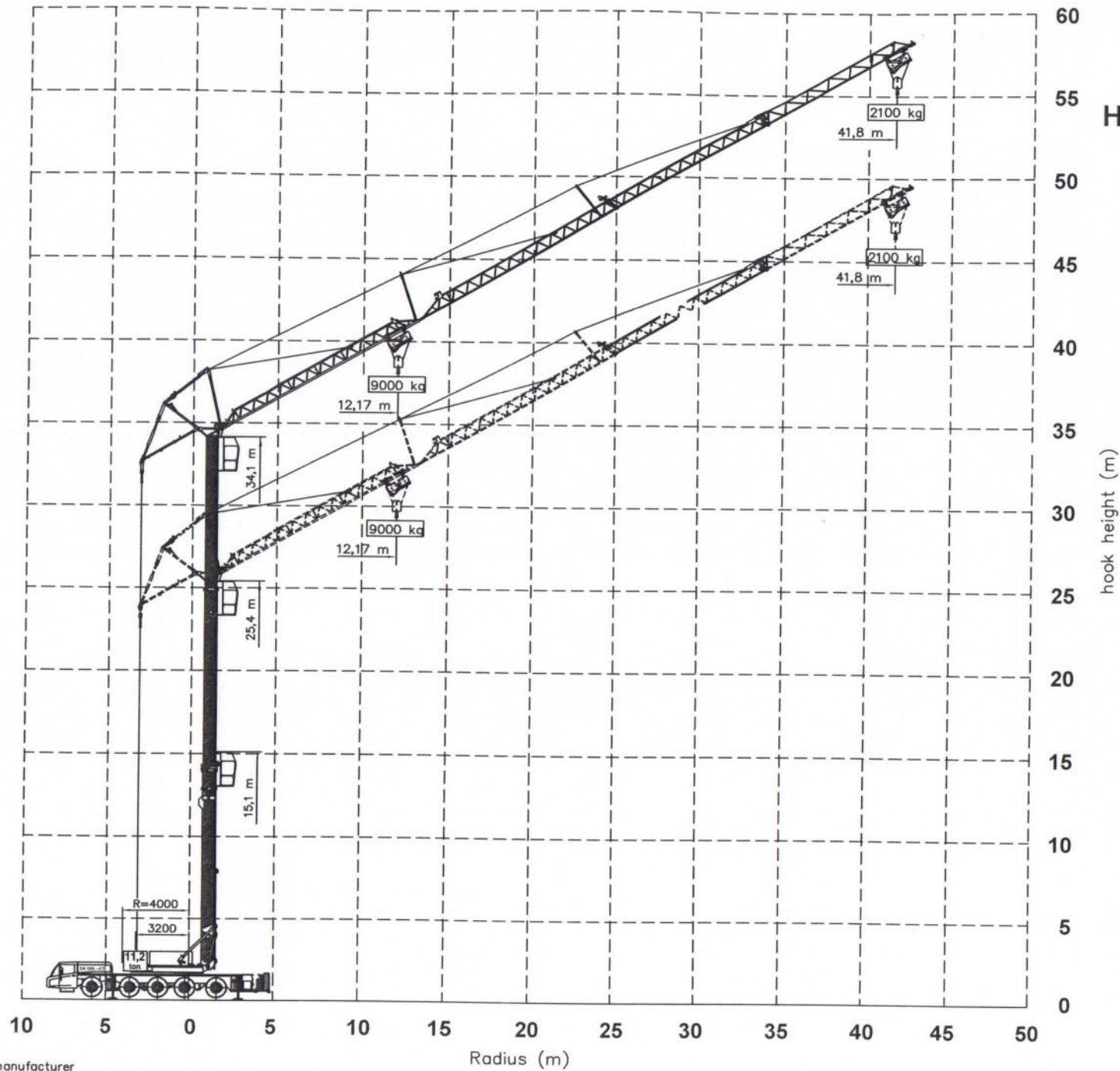


Merwedestraat 15  
 5347 KZ Oss NL  
 Tel. +31 (0)412-626964  
 Fax +31 (0)412-645299

# SPIERINGS HYDRAULIC FOLDING CRANE SK599-AT5

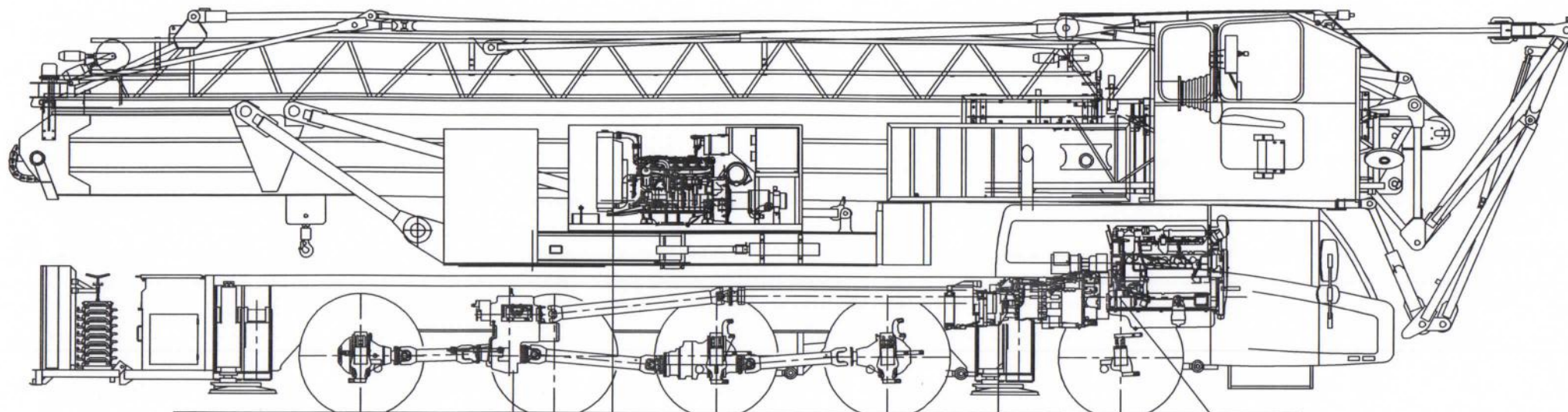


# SPIERINGS HYDRAULIC FOLDING CRANE SK599-AT5



**SPIERINGS  
KRANEN**

Merwedestraat 15  
5347 KZ Oss NL  
Tel. +31 (0)412-626964  
Fax +31 (0)412-645299



Axle 5

Axle 4

Axle 3

Axle 2

Axle 1

Transfer box:  
STEYR VG2001/396  
Road gear  $i=0,89$   
Off road gear  $i=1,54$

Crane diesel engine:  
DETROIT VM D706 IE2  
Power: 96 kW (2600 rpm)  
Torque: 480 Nm (1300 rpm)

Gearbox:  
ZF 16AS2601  
Automatic  
Dry plate clutch  
+ retarder

Carrier diesel engine:  
DAF XE 390 C (EURO 3)  
Power: 390 kW (1900 rpm)  
Torque: 2300 Nm (1500 rpm)

Axle 1 : Steer axle

Axle 2 : Steer drive axle (end reduction  $i=6,35$ )

Axle 3 : Drive axle , non steered (end reduction  $i=6,35$ )

Axle 4 : Steer axle

Axle 5 : Steer drive axle (end reduction  $i=6,35$ )

Tyres

Suspension: hydro-pneumatic on all axles; stroke cyl.

Max. speed carrier

Min. speed carrier (engine at 1000 rpm)

Overall weight

: 445/75 R22,5

: 247 mm

: 85 km/h

: 1,6 km/h

: 60.000 kg.

## Drive train Spierings Folding Crane SK 599 - AT5