

# LIEBHERR MK140-5.1



**DM Cranes Ltd**



Up to 90% CO<sub>2</sub> emissions reduction  
**HVO ready**

# MK 140-5.1

- + Electric crane operation
- + 15°, 30° and 45° luffed positions
- + VarioJib: hook heights up to 94 m and radiuses up to 65 m
- + One-person assembly in 17 minutes (once raised on its supports)
- + Elevating operator's cabin for perfect visibility of the load

**Mobile construction crane**



Hook height	max. 94.4 m
Radius	max. 65.0 m
Max. lifting capacity	8.0 t
Max. lifting capacity at the jib head	1.9 t

**Tel:** 03330 912002 | **Email:** office@dmcranes.co.uk

Northern depot | Southern depot

# LIEBHERR MK140-5.1



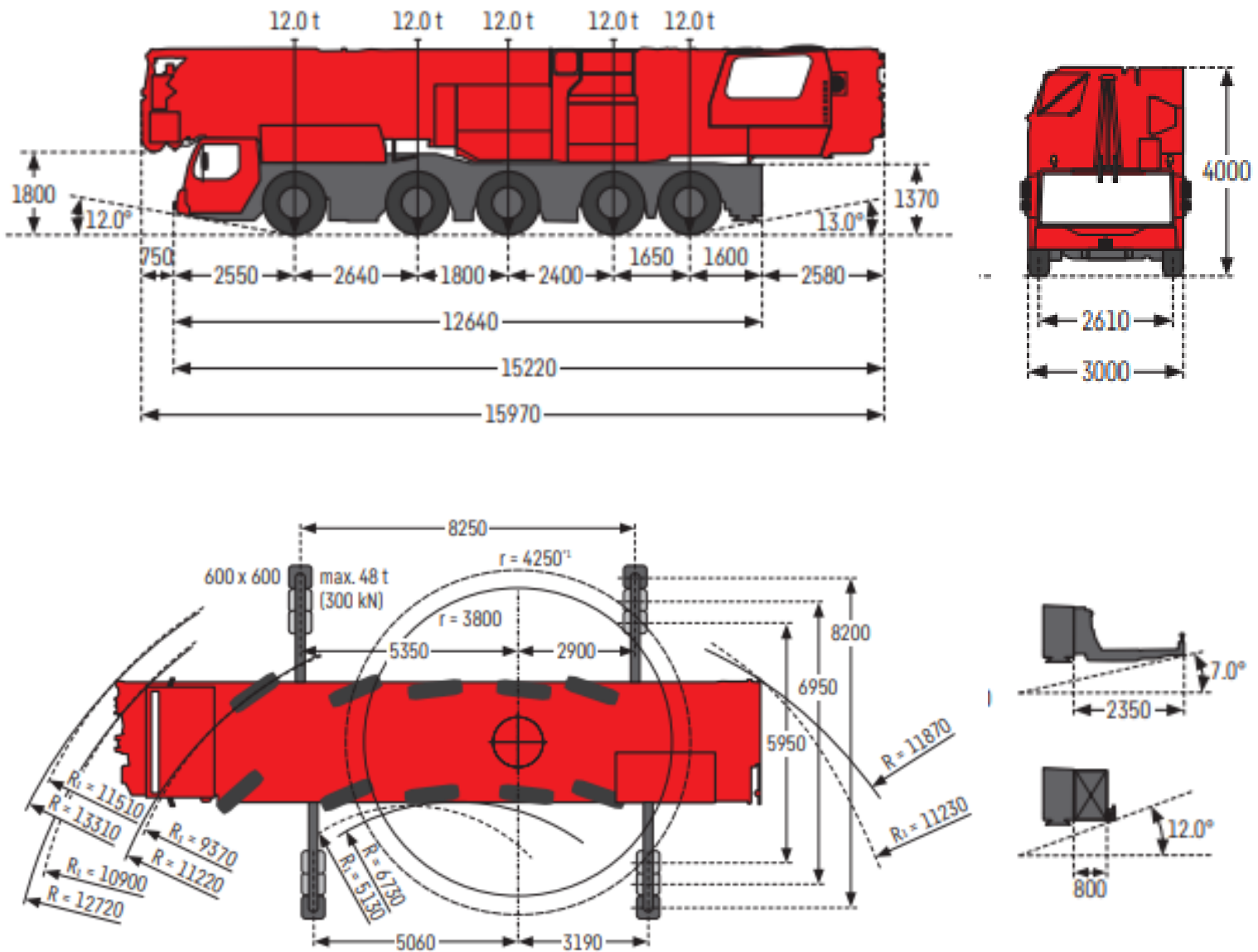
DM Cranes Ltd

MOBILE TOWER CRANES

www.dmcranes.co.uk

## DIMENSIONS

*DIMENSIONS*



R1 = All-wheel steering • \*1 With 9.0 t additional ballast • All dimensions in mm

Tel: 03330 912002 | Email: office@dmcranes.co.uk

Northern depot | Southern depot

# LIEBHERR MK140-5.1



**DM Cranes Ltd**


**MOBILE TOWER CRANES**

[www.dmcranes.co.uk](http://www.dmcranes.co.uk)

## WEIGHT

*WEIGHT*

### Total weight

 **60.0 t**

### <sup>1</sup>with additional ballast

Dismantle additional ballast for road transport, observe country-specific regulations

This information is supplied without liability. Subject to technical modifications.

**Tel:** 03330 912002 | **Email:** [office@dmcranes.co.uk](mailto:office@dmcranes.co.uk)

Northern depot | Southern depot

# LIEBHERR MK140-5.1



DM Cranes Ltd

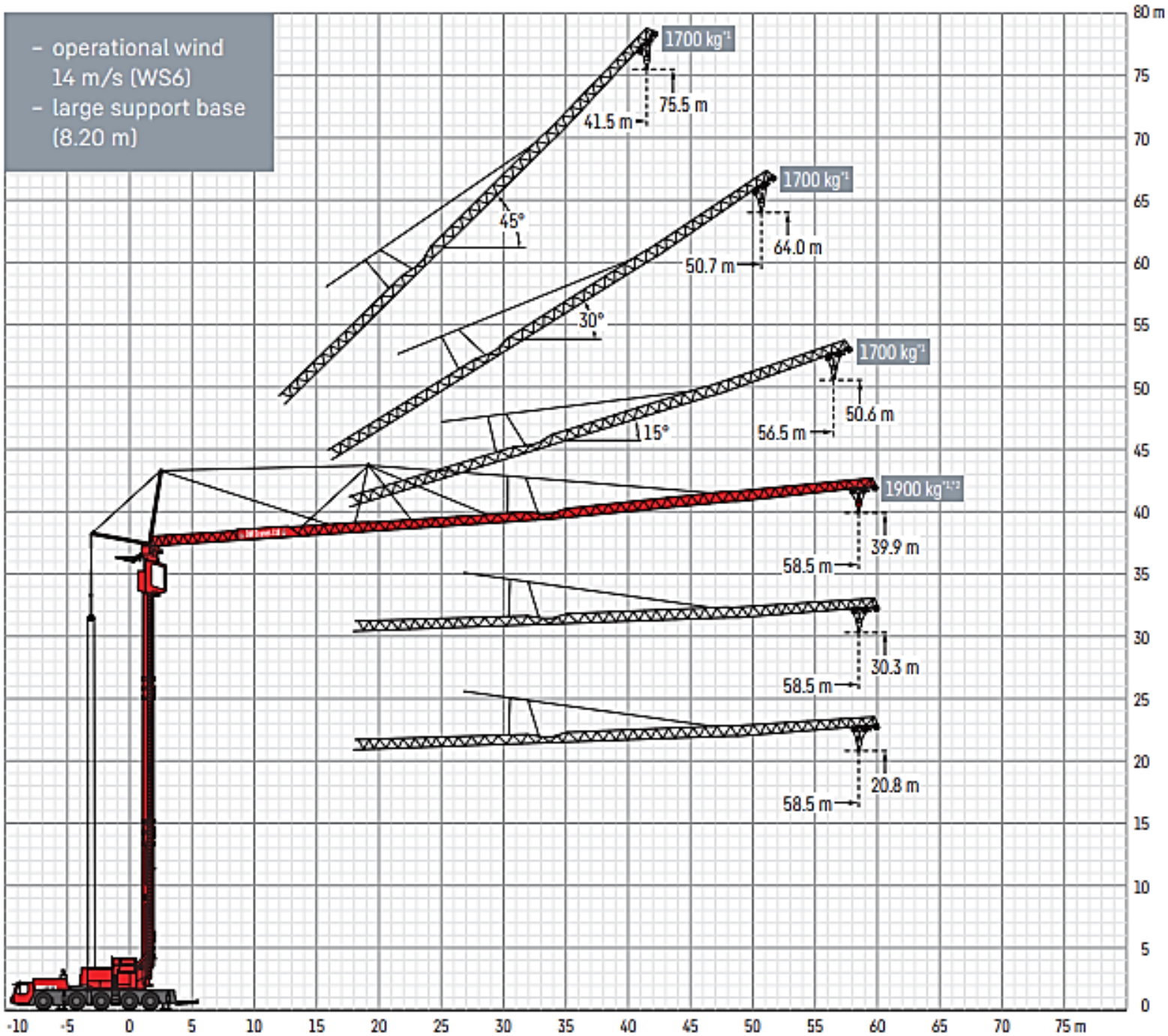
MOBILE TOWER CRANES

[www.dmcranes.co.uk](http://www.dmcranes.co.uk)

## VARIOJIB - TROLLEY MODE

VARIOJIB - TROLLEY MODE

- operational wind 14 m/s (WS6)
- large support base (8.20 m)



# LIEBHERR MK140-5.1

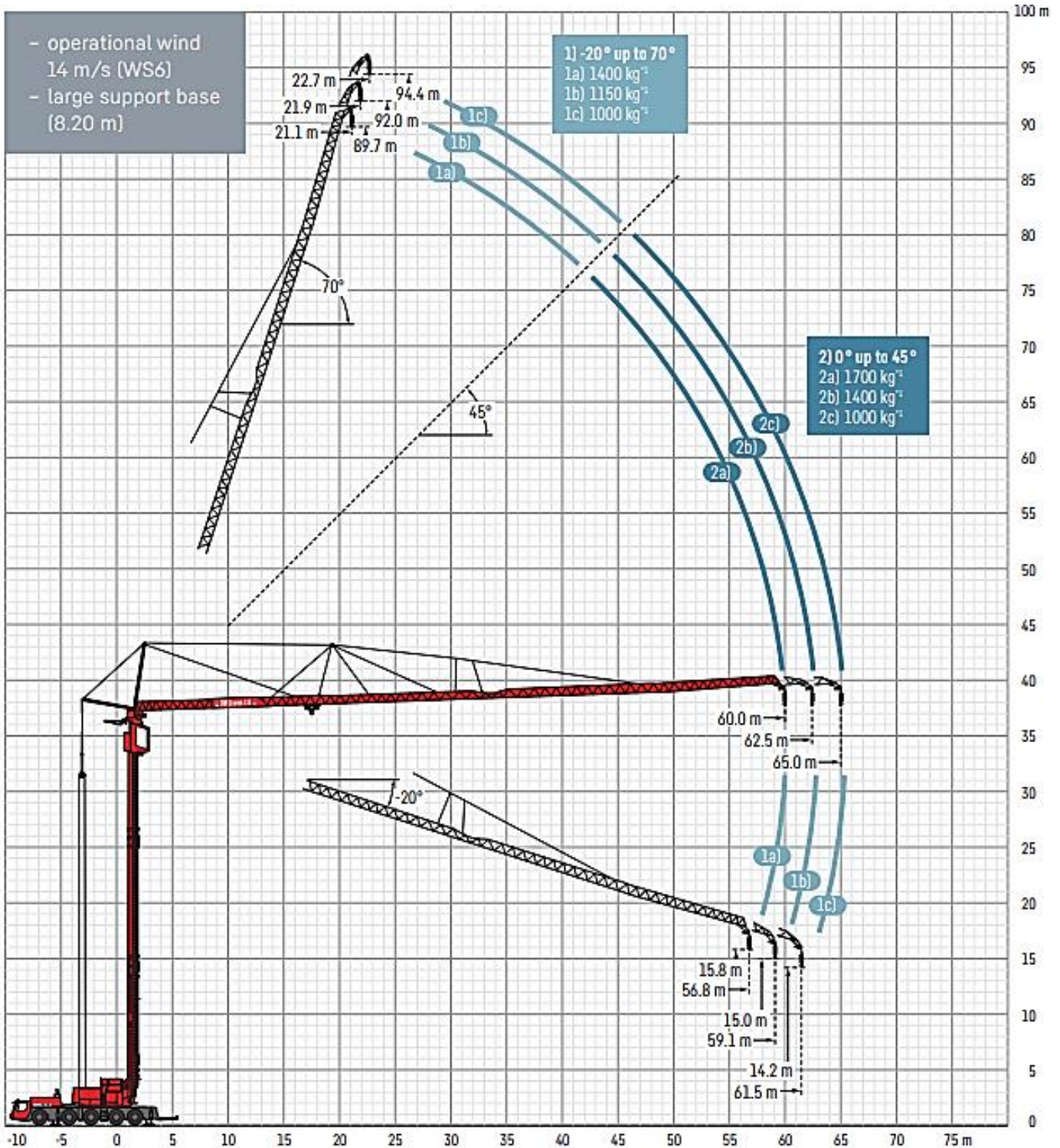


DM Cranes Ltd

MOBILE TOWER CRANES

www.dmcranes.co.uk

## VARIOJIB - LUFFING MODE





**MOBILE TOWER CRANES**

[www.dmcranes.co.uk](http://www.dmcranes.co.uk)

## LOAD CAPACITIES IN TROLLEY MODE

LOAD CAPACITIES IN TROLLEY MODE

a°	m	m	kg	m																		
				3.0	6.0	9.0	12.0	15.0	18.0	21.0	24.0	27.0	30.0	33.0	36.0	39.0	42.0	45.0	48.0	51.0	54.0	57.0
0°	58.5		3.3 - 13.4	8000	8000		7290	6220	5400	4750	4230	3790	3420	3110	2830	2600	2390	2200	2040	1890	1760	1700
			3.3 - 12.0	8000	8000		6630	5630	4870	4270	3780	3380	3050	2760	2520	2310	2120	1950	1800	1670	1550	1500
	Plus <sup>2</sup>		3.3 - 14.4	8000	8000		7706	6504	5613	4925	4379	3934	3565	3254	2988	2758	2558	2381	2224	2084	1958	1900
15°	56.5		3.2 - 54.0	1800	1800																	
			3.2 - 50.0	1800	1800																	
	Plus		3.2 - 41.3	2500	2500																	
			3.2 - 37.8	2500	2500																	
30°	50.7		3.0 - 16.0	6000	6000		5320	4540	3940	3480	3100	2790	2530	2310	2120	1960	1810	1700				
			3.0 - 14.0	6000	6000		5610	4680	4000	3490	3080	2740	2470	2240	2040	1880	1730	1600	1500			
45°	41.5		2.7 - 39.7	1800	1800																	
			2.7 - 36.0	1800	1800																	
	Plus		2.7 - 28.5	2650	2650																	
			2.7 - 26.1	2650	2650																	

- max. 14.0 m/sec (45.9 ft/sec)    - max. 17.0 m/sec (55.8 ft/sec)    - max. 14.0 m/sec (45.9 ft/sec)

## LOAD CAPACITIES WITH JIB EXTENSION

LOAD CAPACITIES WITH JIB EXTENSION

	a - without additional jib head 	b - lattice jib head 1 	c - lattice jib head 1 + 2 
Radius	60.0 m	62.5 m	65.0 m
Lifting capacities at the jib head (-20° up to 70°) <sup>*1</sup>	1400 kg	1150 kg	1000 kg
Lifting capacities at the jib head (0° up to 45°) <sup>*2</sup>	1700 kg	1400 kg	1000 kg

\*1 Lifting capacities with 9.0 t additional ballast

\*2 Plus load curves with control limitations in comparison to standard load curve. See the operating manual for more details.

\*3 Applies to a support of 8.20 m x 8.25 m and 9.0 t additional ballast. Further information in the operating manual

