

SPIERINGS SK488 AT4



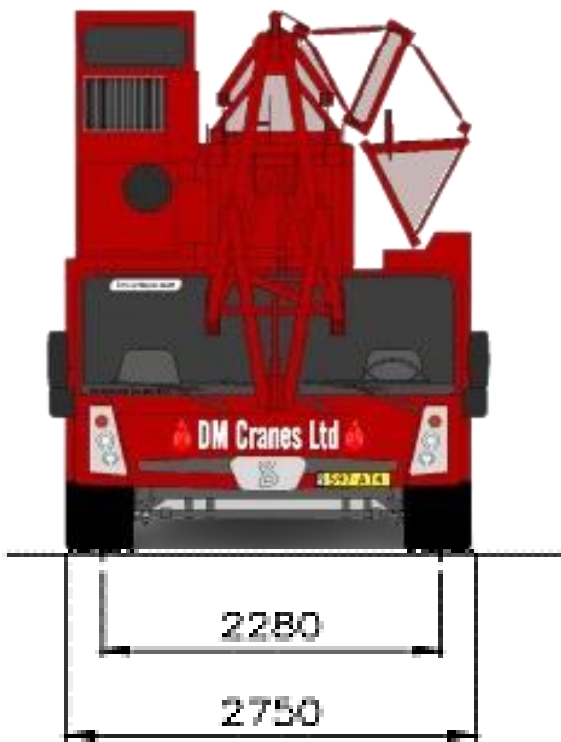
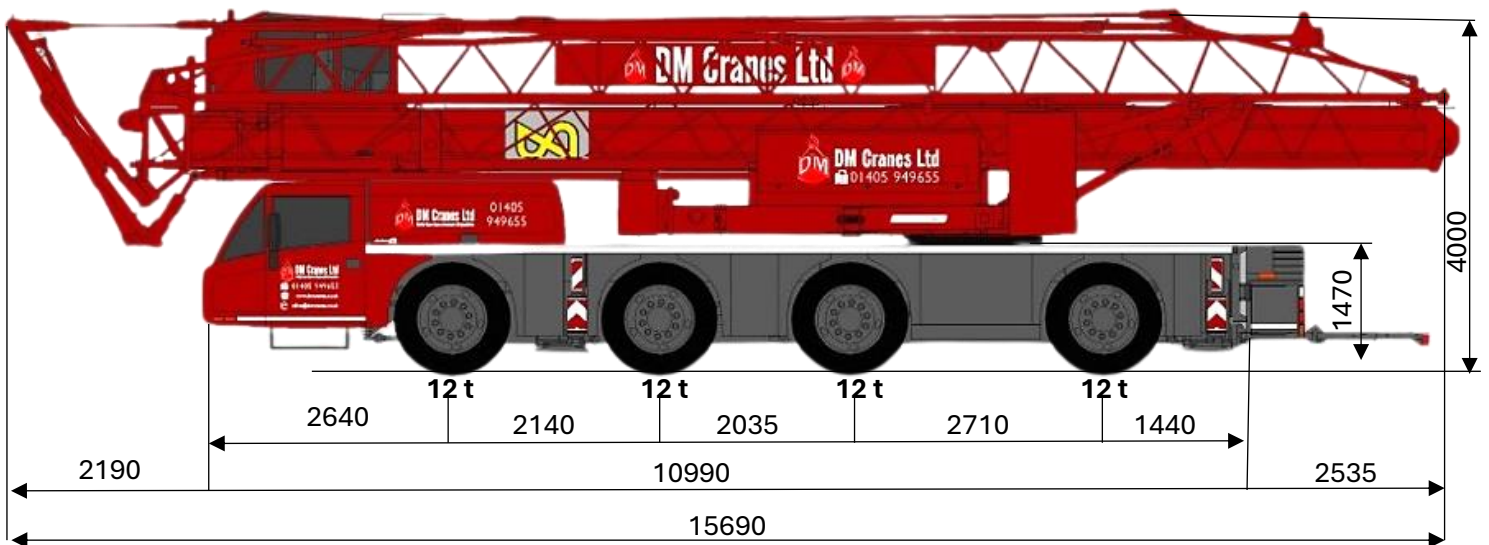
DM Cranes Ltd

MOBILE TOWER CRANES

www.dmcranes.co.uk

SPIERINGS HYDRAULIC FOLDING CRANE

СПИЕРИНГС НАДВУЛГІС ԿՕՂԴԻՆԳ ՏՐԱՆԵ



 **SPIERINGS
KRANEN**

Merwedestraat 15
5347 KZ Oss NL
Tel. +31 (0)412-626964
Fax +31 (0)412-645299

Total weight: 48000 kg

Tel: 03330 912002 | Email: office@dmcranes.co.uk

Northern depot | Southern depot

SPIERINGS SK488 AT4



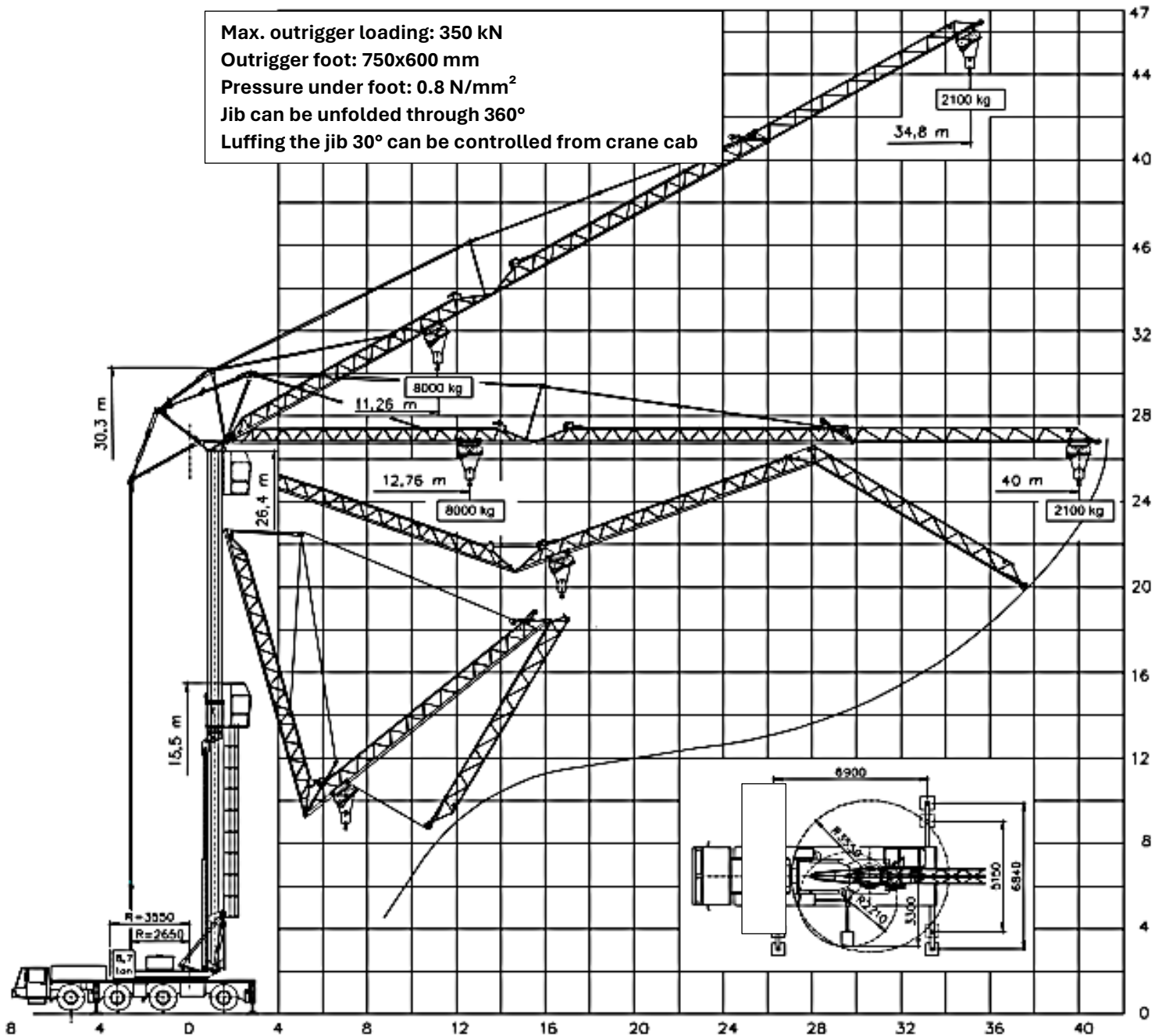
DM Cranes Ltd

MOBILE TOWER CRANES

www.dmcranes.co.uk

SPIERINGS HYDRAULIC FOLDING CRANE

SPIERINGS HYDRAULIC FOLDING CRANE



Tel: 03330 912002 | Email: office@dmcranes.co.uk

Northern depot | Southern depot

SPIERINGS SK488 AT4



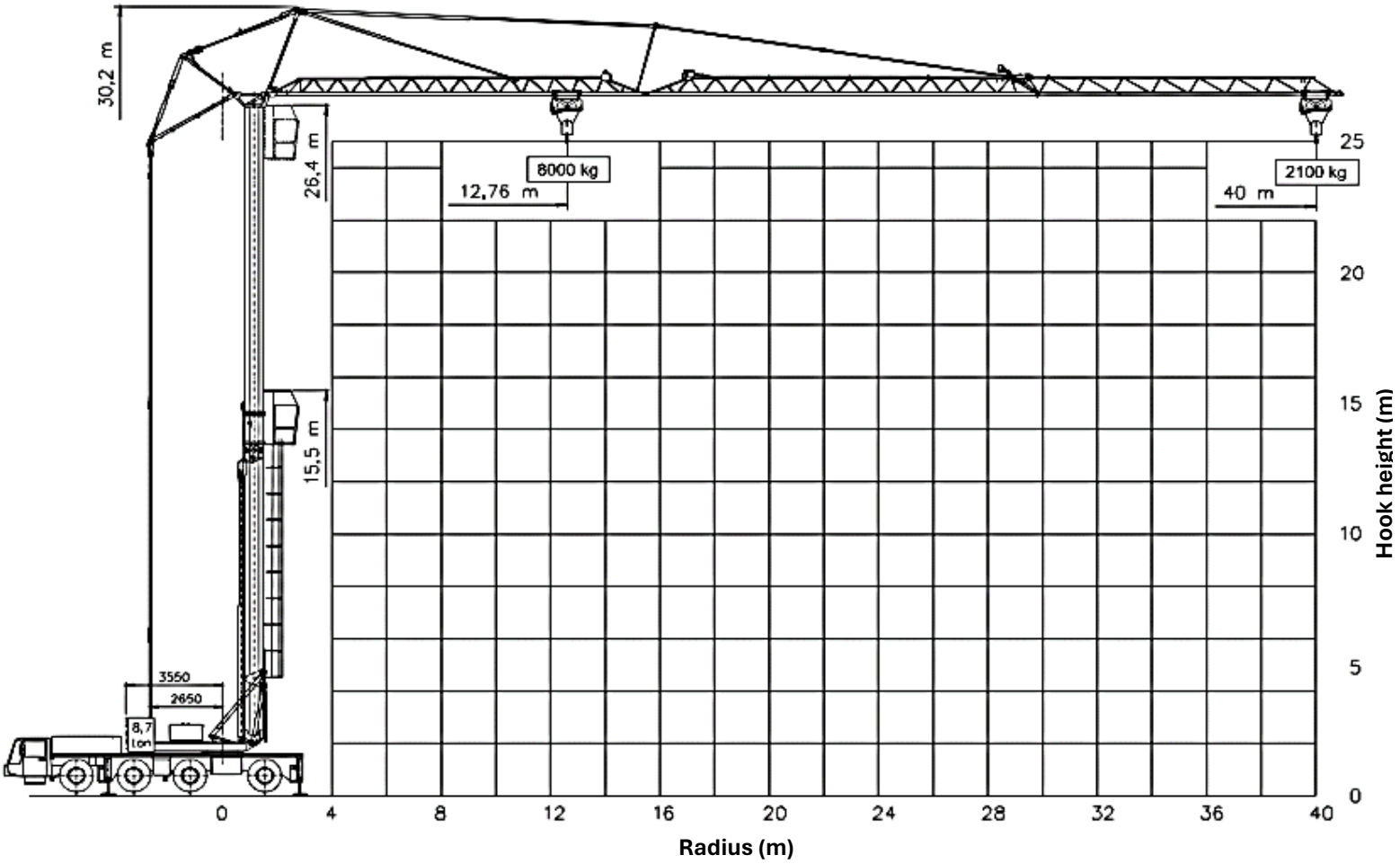
DM Cranes Ltd

MOBILE TOWER CRANES

www.dmcranes.co.uk

SPIERINGS HYDRAULIC FOLDING CRANE

SPIERINGS HYDRAULIC FOLDING CRANE



Tel: 03330 912002 | Email: office@dmcranes.co.uk

Northern depot | Southern depot

SPIERINGS SK488 AT4



DM Cranes Ltd

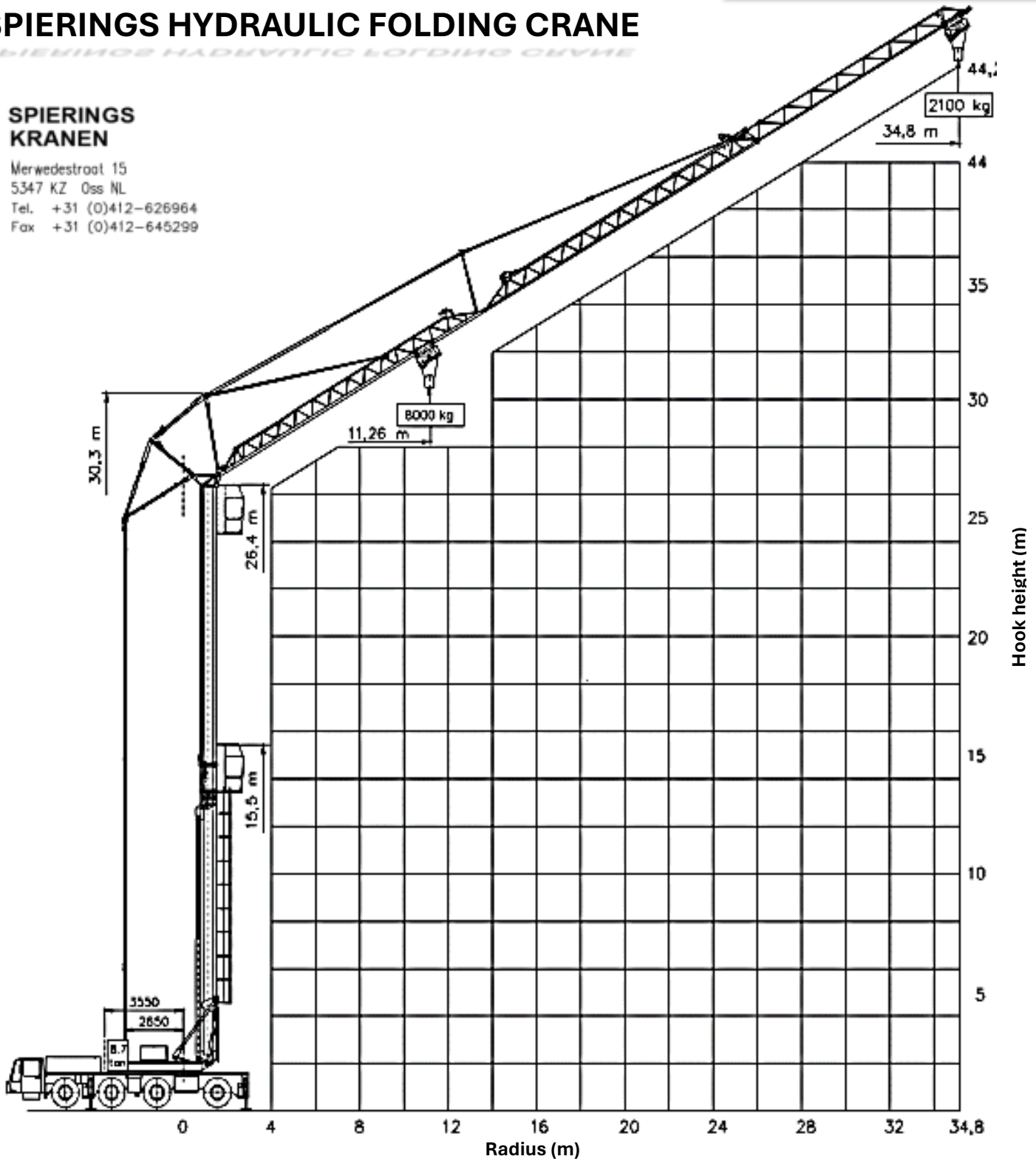
MOBILE TOWER CRANES

www.dmcranes.co.uk

SPIERINGS HYDRAULIC FOLDING CRANE



Merwedestraat 15
5347 KZ Oss NL
Tel. +31 (0)412-626964
Fax +31 (0)412-645299



Tel: 03330 912002 | Email: office@dmcranes.co.uk

Northern depot | Southern depot

SPIERINGS SK488 AT4

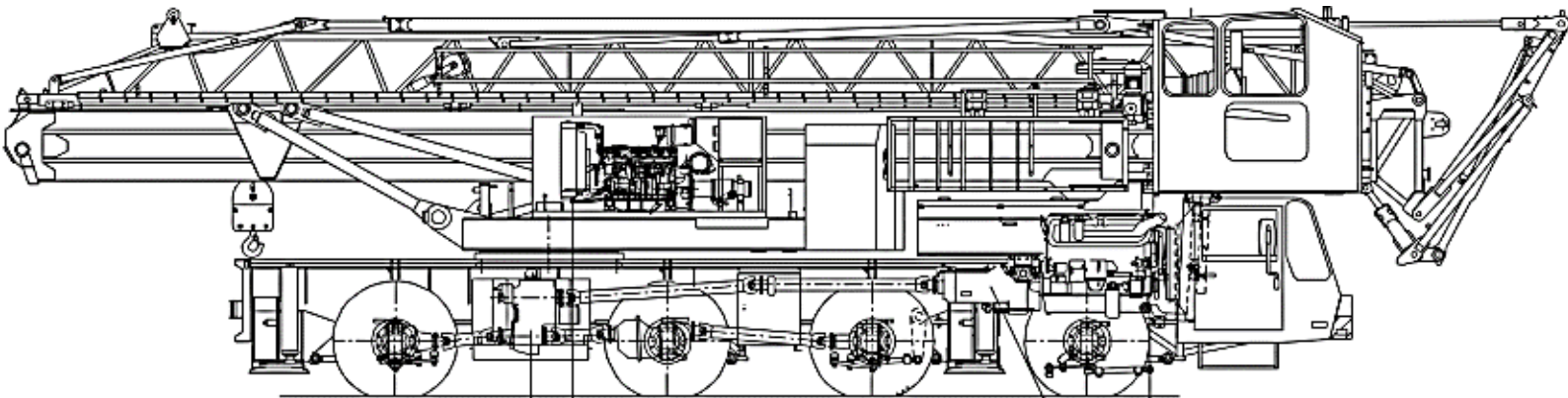


DM Cranes Ltd

MOBILE TOWER CRANES

www.dmcranes.co.uk

SPIERINGS HYDRAULIC FOLDING CRANE



Axle 4

Transferor:
STEYR VG2001/396
Road gear $i = 0,89$
Off road gear $i = 1,54$

Axle 3

Crane diesel engine
DETROIT VM D706 IE2
Power: 96 kW (2600 rpm)
Torque: 480 Nm (1300 rpm)

Axle 2

Gearbox:
ZF 16S151
Manually operated
+ air power assistance
+ dry plate clutch

Axle 1

Carrier diesel engine:
DAF XE 280 C (EURO 3)
Power: 280 kW (1900 rpm)
Torque: 1750 Nm (1500 rpm)

Axle 1: Steer axle
Axle 2: Steer drive axle (end reduction $i=6,57$)
Axle 3: Drive axle, not steering (end reduction $i=6,57$)
Axle 4: teer drive axle (end reduction $i=6,57$)

Tyres:	445/75 R22,5
Suspension: hydro-pneumatic on all axles; stroke cyl:	247 mm
Max. speed carrier:	85 km/h
Min. speed carrier (engine at 100 rpm):	1,6 km/h
Overall weight:	48,000 kg.

Tel: 03330 912002 | Email: office@dmcranes.co.uk

Northern depot | Southern depot

SPIERINGS SK488 AT4



DM Cranes Ltd

MOBILE TOWER CRANES

www.dmcranes.co.uk

SPIERINGS HYDRAULIC FOLDING CRANE

SPIERINGS HYDRAULIC FOLDING CRANE



	Mark: SPIERINGS Type: SK488-AT4																																																					
	Crane identification																																																					
Serial number: <input type="text"/>	Crane group : 3 as per NEN 2018 Loadspectrum : 2 as per NEN 2018 Classification : A as per NEN 2018 Stability : as per NEN 2022	Identification-number 93 tm	Max. load 8,0 tonne	Max. radius with max. load 12,76 m	Max. capacity 102 tm	Max. jib lenght 40m																																																
Year of construction: <input type="text"/>																																																						
Speeds																																																						
Jib horizontal / jib 30° luffed																																																						
		LIFTING CHART Outrigger spread 6,90 m x 6,84 m (up to wind force 7 on the beaufort scale)																																																				
<table border="1"> <thead> <tr> <th>m/min</th> <th>kg</th> </tr> </thead> <tbody> <tr> <td>18</td> <td>8000</td> </tr> <tr> <td>27</td> <td>4000</td> </tr> <tr> <td>40</td> <td>2000</td> </tr> <tr> <td>75</td> <td>0</td> </tr> </tbody> </table>		m/min	kg	18	8000	27	4000	40	2000	75	0	Jib horizontal Hookheight 25 m (height under jib 26,8 m)																																										
m/min	kg																																																					
18	8000																																																					
27	4000																																																					
40	2000																																																					
75	0																																																					
<table border="1"> <thead> <tr> <th>radius (m)</th> <th>load (kg)</th> </tr> </thead> <tbody> <tr><td>3,5</td><td>8000</td></tr> <tr><td>12,76</td><td>7825</td></tr> <tr><td>15</td><td>7170</td></tr> <tr><td>20</td><td>6610</td></tr> <tr><td>25</td><td>6130</td></tr> <tr><td>30</td><td>5710</td></tr> <tr><td>35</td><td>5340</td></tr> <tr><td>40</td><td>5015</td></tr> <tr><td>45</td><td>4725</td></tr> <tr><td>50</td><td>4465</td></tr> <tr><td>55</td><td>4230</td></tr> <tr><td>60</td><td>4020</td></tr> <tr><td>65</td><td>3850</td></tr> <tr><td>70</td><td>3685</td></tr> <tr><td>75</td><td>3485</td></tr> <tr><td>80</td><td>3200</td></tr> <tr><td>85</td><td>2950</td></tr> <tr><td>90</td><td>2735</td></tr> <tr><td>95</td><td>2550</td></tr> <tr><td>100</td><td>2390</td></tr> <tr><td>105</td><td>2235</td></tr> <tr><td>110</td><td>2100</td></tr> </tbody> </table>		radius (m)	load (kg)	3,5	8000	12,76	7825	15	7170	20	6610	25	6130	30	5710	35	5340	40	5015	45	4725	50	4465	55	4230	60	4020	65	3850	70	3685	75	3485	80	3200	85	2950	90	2735	95	2550	100	2390	105	2235	110	2100							
radius (m)	load (kg)																																																					
3,5	8000																																																					
12,76	7825																																																					
15	7170																																																					
20	6610																																																					
25	6130																																																					
30	5710																																																					
35	5340																																																					
40	5015																																																					
45	4725																																																					
50	4465																																																					
55	4230																																																					
60	4020																																																					
65	3850																																																					
70	3685																																																					
75	3485																																																					
80	3200																																																					
85	2950																																																					
90	2735																																																					
95	2550																																																					
100	2390																																																					
105	2235																																																					
110	2100																																																					
<table border="1"> <thead> <tr> <th>hookheight (m)</th> <th>radius (m)</th> </tr> </thead> <tbody> <tr><td>30,6</td><td>3,5</td></tr> <tr><td>32,7</td><td>11,26</td></tr> <tr><td>35,8</td><td>15</td></tr> <tr><td>38,5</td><td>20</td></tr> <tr><td>41,4</td><td>25</td></tr> <tr><td>44,2</td><td>30</td></tr> <tr><td>47,0</td><td>34,8</td></tr> </tbody> </table>		hookheight (m)	radius (m)	30,6	3,5	32,7	11,26	35,8	15	38,5	20	41,4	25	44,2	30	47,0	34,8																																					
hookheight (m)	radius (m)																																																					
30,6	3,5																																																					
32,7	11,26																																																					
35,8	15																																																					
38,5	20																																																					
41,4	25																																																					
44,2	30																																																					
47,0	34,8																																																					
		LIFTING CHART Outrigger spread 6,90 m x 5,15 m (up to wind force 6 on the beaufort scale)																																																				
<table border="1"> <thead> <tr> <th>0 - 70 m/min</th> </tr> </thead> <tbody> <tr> <td>0 - 0,9 rpm</td> </tr> </tbody> </table>		0 - 70 m/min	0 - 0,9 rpm	Jib horizontal haakhoogte 25 m (hoogte onder de giek 26,8m)																																																		
0 - 70 m/min																																																						
0 - 0,9 rpm																																																						
<table border="1"> <thead> <tr> <th>radius (m)</th> <th>Load (kg)</th> </tr> </thead> <tbody> <tr><td>3,5</td><td>8000</td></tr> <tr><td>9,3</td><td>7305</td></tr> <tr><td>10</td><td>6495</td></tr> <tr><td>15</td><td>5835</td></tr> <tr><td>20</td><td>5295</td></tr> <tr><td>25</td><td>4860</td></tr> <tr><td>30</td><td>4450</td></tr> <tr><td>35</td><td>4060</td></tr> <tr><td>40</td><td>3690</td></tr> <tr><td>45</td><td>3360</td></tr> <tr><td>50</td><td>3060</td></tr> <tr><td>55</td><td>2790</td></tr> <tr><td>60</td><td>2540</td></tr> <tr><td>65</td><td>2310</td></tr> <tr><td>70</td><td>2100</td></tr> <tr><td>75</td><td>1935</td></tr> <tr><td>80</td><td>1790</td></tr> <tr><td>85</td><td>1660</td></tr> <tr><td>90</td><td>1545</td></tr> <tr><td>95</td><td>1440</td></tr> <tr><td>100</td><td>1350</td></tr> </tbody> </table>		radius (m)	Load (kg)	3,5	8000	9,3	7305	10	6495	15	5835	20	5295	25	4860	30	4450	35	4060	40	3690	45	3360	50	3060	55	2790	60	2540	65	2310	70	2100	75	1935	80	1790	85	1660	90	1545	95	1440	100	1350									
radius (m)	Load (kg)																																																					
3,5	8000																																																					
9,3	7305																																																					
10	6495																																																					
15	5835																																																					
20	5295																																																					
25	4860																																																					
30	4450																																																					
35	4060																																																					
40	3690																																																					
45	3360																																																					
50	3060																																																					
55	2790																																																					
60	2540																																																					
65	2310																																																					
70	2100																																																					
75	1935																																																					
80	1790																																																					
85	1660																																																					
90	1545																																																					
95	1440																																																					
100	1350																																																					
<table border="1"> <thead> <tr> <th>hookheight (m)</th> <th>radius (m)</th> </tr> </thead> <tbody> <tr><td>28,8</td><td>3,5</td></tr> <tr><td>29,8</td><td>8,26</td></tr> <tr><td>32,7</td><td>10</td></tr> <tr><td>35,8</td><td>15</td></tr> <tr><td>38,5</td><td>20</td></tr> <tr><td>41,4</td><td>25</td></tr> <tr><td>44,2</td><td>30</td></tr> <tr><td>47,0</td><td>34,8</td></tr> </tbody> </table>		hookheight (m)	radius (m)	28,8	3,5	29,8	8,26	32,7	10	35,8	15	38,5	20	41,4	25	44,2	30	47,0	34,8																																			
hookheight (m)	radius (m)																																																					
28,8	3,5																																																					
29,8	8,26																																																					
32,7	10																																																					
35,8	15																																																					
38,5	20																																																					
41,4	25																																																					
44,2	30																																																					
47,0	34,8																																																					
		Jib 30° luffed																																																				
<table border="1"> <thead> <tr> <th>radius (m)</th> <th>load (kg)</th> </tr> </thead> <tbody> <tr><td>3,5</td><td>8000</td></tr> <tr><td>8,26</td><td>7175</td></tr> <tr><td>10</td><td>6285</td></tr> <tr><td>15</td><td>5580</td></tr> <tr><td>20</td><td>4955</td></tr> <tr><td>25</td><td>4415</td></tr> <tr><td>30</td><td>3965</td></tr> <tr><td>35</td><td>3595</td></tr> <tr><td>40</td><td>3295</td></tr> <tr><td>45</td><td>3065</td></tr> <tr><td>50</td><td>2870</td></tr> <tr><td>55</td><td>2700</td></tr> <tr><td>60</td><td>2540</td></tr> <tr><td>65</td><td>2400</td></tr> <tr><td>70</td><td>2275</td></tr> <tr><td>75</td><td>2160</td></tr> <tr><td>80</td><td>2050</td></tr> <tr><td>85</td><td>1955</td></tr> <tr><td>90</td><td>1865</td></tr> <tr><td>95</td><td>1785</td></tr> <tr><td>100</td><td>1635</td></tr> <tr><td>105</td><td>1570</td></tr> <tr><td>110</td><td>1450</td></tr> <tr><td>115</td><td>1350</td></tr> </tbody> </table>		radius (m)	load (kg)	3,5	8000	8,26	7175	10	6285	15	5580	20	4955	25	4415	30	3965	35	3595	40	3295	45	3065	50	2870	55	2700	60	2540	65	2400	70	2275	75	2160	80	2050	85	1955	90	1865	95	1785	100	1635	105	1570	110	1450	115	1350			
radius (m)	load (kg)																																																					
3,5	8000																																																					
8,26	7175																																																					
10	6285																																																					
15	5580																																																					
20	4955																																																					
25	4415																																																					
30	3965																																																					
35	3595																																																					
40	3295																																																					
45	3065																																																					
50	2870																																																					
55	2700																																																					
60	2540																																																					
65	2400																																																					
70	2275																																																					
75	2160																																																					
80	2050																																																					
85	1955																																																					
90	1865																																																					
95	1785																																																					
100	1635																																																					
105	1570																																																					
110	1450																																																					
115	1350																																																					

