



R R STONE  
Solutions for Stone



A highly penetrative reactive sealant with two types specially developed for low porosity stones and substrates such as slate and honed granite or porous stones and substrates such as limestone

R R STONE SEAL and associated products have been developed over many years to provide a comprehensive system for the cleaning, protection and subsequent care of slate, most other stone and stone-like materials. It has been used with outstanding results in a wide range of locations and conditions.

## DESCRIPTION

R R STONE SEAL is a highly developed one-pack very low viscosity non-yellowing penetrative sealant and consolidant for stone and other substrates which protects the substrate whilst keeping the 'natural' appearance of the material.

It also can be used to give surface coatings on stone and a wide range of other surfaces without leaving application marks in the cured film.

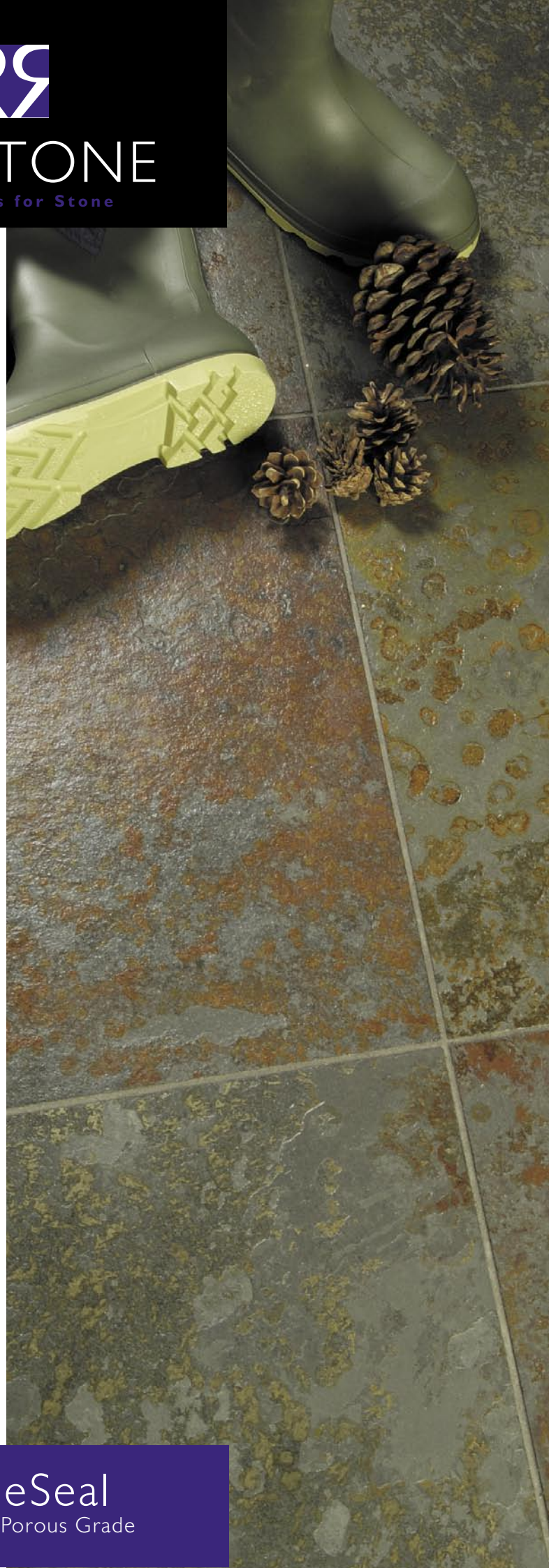
## PROPERTIES

It has exceptional chemical resistance, colour stability and resistance to u/v and general weathering effects. It has very high wear and abrasion resistance.

Non-toxic, bio-degradeable, non-flammable solvents.

Fast curing - can be accelerated by addition of catalyst.

Long shelf-life - in excess of 12 months at 15° Celsius in unopened cans.



StoneSeal  
Standard & Porous Grade

## USES

**Penetrative sealing** - 'Natural' finish - Slate, textured granites, marble, most other stones, concrete, terrazzo, synthetic and cultured stone, unglazed ceramic, terracotta, fireclay, stoneware and earthenware surfaces and objects including:

- Flooring and wall cladding; unglazed quarry, ceramic and terracotta floor, wall and work-top/table top tiles;
- Stone and wooden vanitory/table/worktops/ etc;
- Reconstituted marble, granite and similar resin-bonded or cement-bonded tiles and artefacts;
- Plaster and alabaster mouldings, statues, artefacts;
- Brick, decorative and exposed aggregate concretes, including terrazzo and terrazzo tiles;
- Stabilisation of friable and decaying stone, plaster, terracotta, concrete etc. substrates, surfaces etc.;

### Coating (surface film)

- Table/vanitory/bathroom etc. surfaces exposed to acidic spillage;
- Marble and other calcareous external cladding (acidic polluted atmosphere protection).
- Many surfaces (including hard plastics, painted surfaces and metals) against graffiti and other soiling/defacement;
- Restoring worn/dull vinyl flooring, wall coverings, table/bar tops etc.
- Wide range of other uses e.g. coating/sealing swimming pools/ bathroom/shower trays and other tiled/grouted installations - where it is often impossible to locate sources of leakage - saturation with STONE SEAL (one or more treatments) usually cures the problem 'invisibly' without the cost downtime or disfiguring effects of the traditional approaches of re-tiling or applying a complete internal lining.

## APPLICATION

For full details, see separate leaflet.

## MAINTENANCE OF TREATED SURFACES

STONE SEAL treated surfaces - either sealed or coated - are maintained by regular dust control and DAMP mopping with clean water - very dilute neutral non-soap detergents may be used to remove stubborn marks. Finish by dry mopping or buffing to remove 'water smears' as usual.

It should not be necessary to use any other cleaners - even graffiti can usually be removed, at least from smooth surfaces, by water-based solvent/detergents and rubbing with a cloth.

If necessary, a cloth dampened with white spirit or xylene can be used.

In extraordinary cases, the damaged area can be removed with methylene chloride-based paint strippers and STONE SEAL reapplied to that area only: Because of the thinness and non-yellowing character of the film, it is usually unnecessary to strip and recoat the whole surface to obtain an 'invisible' repair.

## TECHNICAL INFORMATION

The basic properties of the product - very good colour, transparent, non-yellowing, highly penetrative, high chemical and physical properties on cure, safe to use - gives very wide usage possibilities in addition to the original application of sealing/coating Stone.

**Flash point** - 40° to above 65° Celsius depending on grade

**Solids (non-volatile at 105° Celsius) content** 35 - 40%

**Free isocyanate content:** less than 0.2% on solids

**Hazard Symbol** - Xi (irritant)

**Cure time**, at 20° Celsius - 50 micron wet film (20M2/L):

Tack free in 4 - 6 hrs; Hard dry in 8 - 10 hrs

With max, recommended catalyst level:

Tack-free in 30 - 60 min; Hard Dry - 1 - 2 hrs

**Colour** (DIN 6162, max) - 2; (PRS, max) - 1

**Viscosity**, 20° C, mPs - 10-15 mPs

**Surface tension** (dynes/cm) - 22-23

**Specify gravity** - 0.99

**Pencil Hardness of cured films** - 9-10H

**Elongation at break** - 150%

**Coverage** - depends on substrate porosity.

20-25M2/L on dense, honed slate, or similar

10-15M2/L on cleft, flamed surfaces allowing for 2 applications

8-10M2/L on porous limestones, sandstones etc.

## HEALTH AND SAFETY

The solvents and other components in STONE SEAL have been selected to maximise technical performance whilst minimising hazards in use and to the environment.

The solvents are biodegradable; the other components are harmless to the environment when cured.

In use, normal precautions should be taken to avoid prolonged exposure to fumes/vapours, to avoid prolonged skin contact or ingestion.

Provide good ventilation or use suitable respirator.

Use rubber gloves.

Use goggles when working overhead or spraying.

Containers of the product should be stored in a cool, dry place.

Dispose of unwanted material by absorbing in cloths, sand, earth etc., douse with water, allow to stand for 24 hours and dispose of as refuse according to local regulations.

## AVAILABILITY

250ml, 1 litre, 5 litre rectangular cans.

*IMPORTANT: This information is provided for the guidance of prospective users: no liability, either express or implied, can be undertaken by the manufacturer - it is the responsibility of the intending user to determine fitness for purpose, although the manufacturers endeavour to ensure that the best advice and recommendations are given, based on laboratory and field experience. Liability is limited to replacement of materials found to be defective in materials or manufacture.*

R R Stone Co Ltd

Gatefoot Mill, Windermere Road,  
Staveley, Cumbria LA8 9PL

+44 (0) 1539 822666 [www.rrstone.co.uk](http://www.rrstone.co.uk)