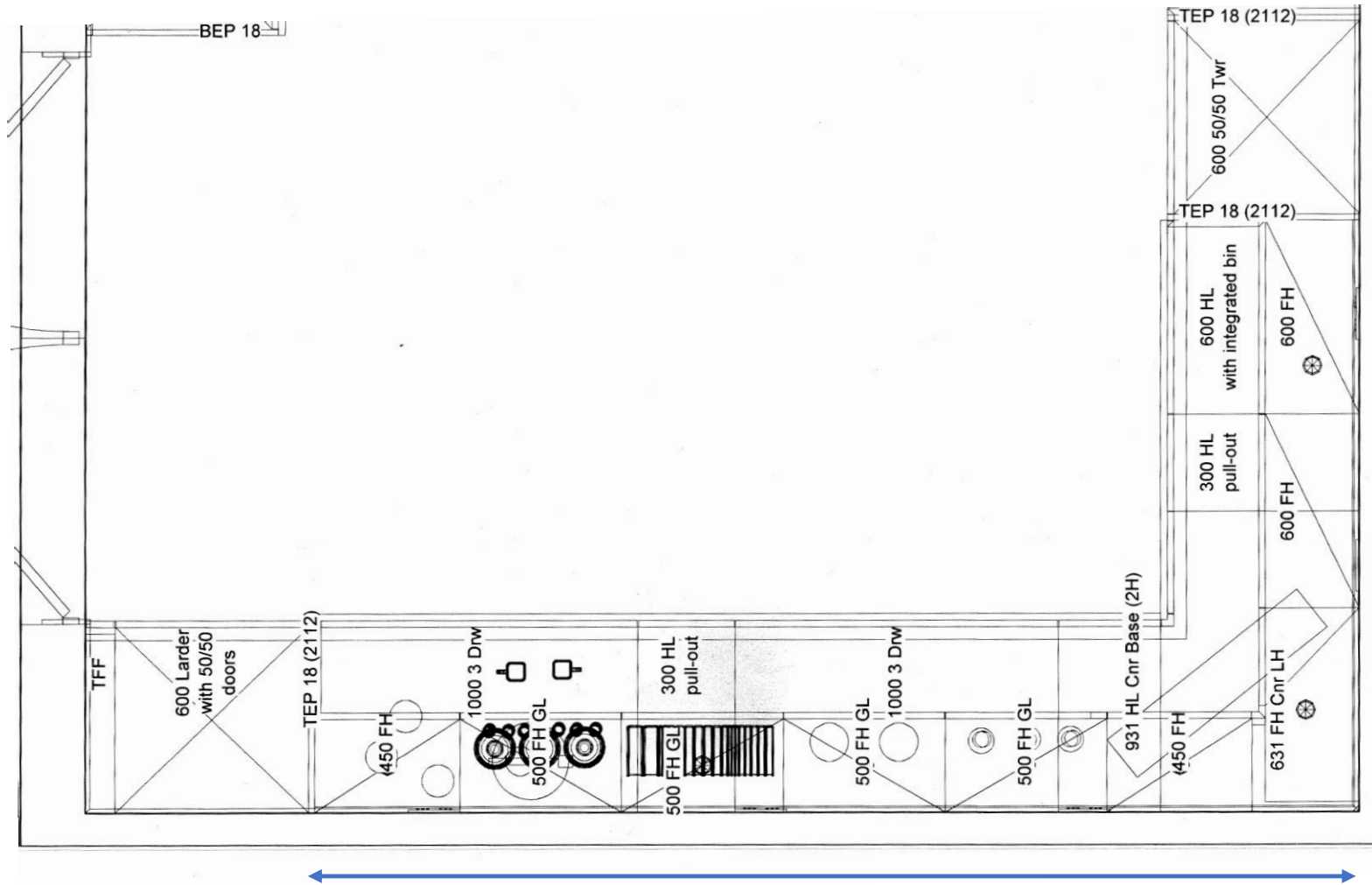


Notes

- “Sharknose” Edge profile
- Curved Upstand – Standard Height (10cm?)
- Everest Corian
- 2 Separate Sides to the Kitchen, both “L Shaped”
- 1 and a half Corian Sink with stainless steel base and white sides for both
 - Air button for Waste Disposal
- Grooves in Worktop for Draining into Sink
- Corian Windowsill with Sharknose profile and joined to Upstand

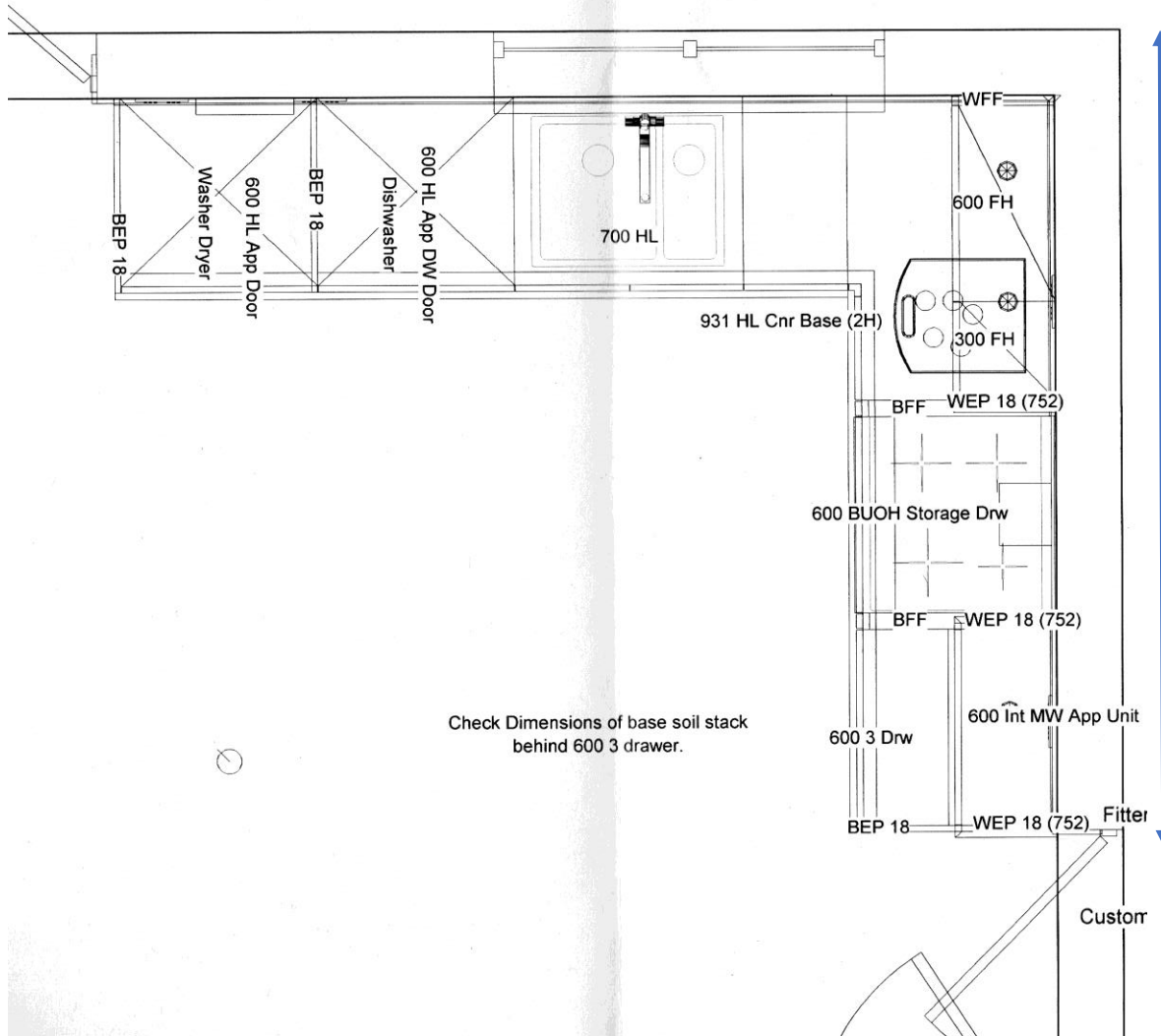
Side 1 –No cutouts, etc. Larder units both sides.



3231mm (Approx)

1831mm
(Approx)

2831mm (Approx)



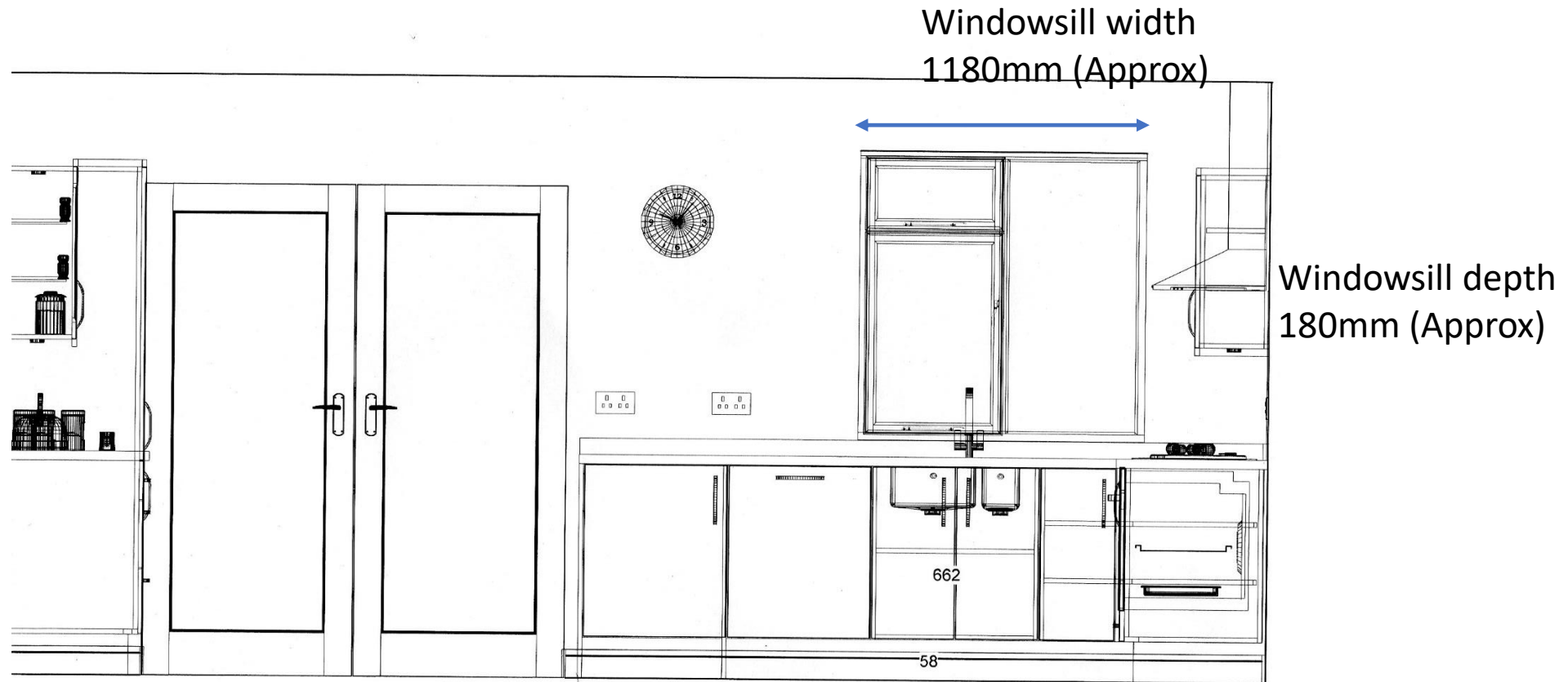
Side 2

Cutouts needed for:

- One and a half sink
 - Air Button for Waste Disposal
- Grooves for Draining into Sink
- Induction Hob

2131mm (Approx)

Side 2 – Sink view



I estimate that the gap between the top of the upstand and the bottom of the windowsill will be approx. 2cm.

Therefore, the upstand under the windowsill should be slightly taller in this part so that the upstand meets the bottom of the windowsill